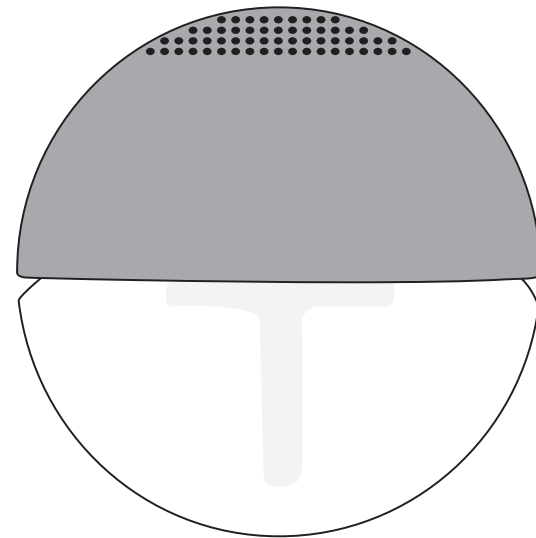


USER'S MANUAL



AIR FRESHENER

ORBIT KJ869M

USER'S MANUAL

DEAR CUSTOMERS!

Congratulations on your purchase of the ORBIT KJ869M air freshener. We hope this appliance will meet all your expectations.

Please read the user's manual very carefully before operating this appliance.

The producer reserves the right to change or modify the appliance specifications without prior notice.

TECHNICAL INFORMATION

| Supply voltage (DC Volt) | Power (Watt) | Permitted water temperature (°C) | Water tank capacity (L) | Maximum continuous working time | Emission area |
|--------------------------|--------------|----------------------------------|-------------------------|---------------------------------|-------------------|
| 230V | 14W | 1 - 40 ° | 1,1 litres | 24 h | 40 m ² |

BASIC SAFETY PRECAUTIONS

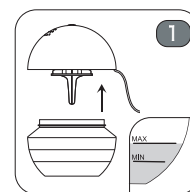
- Read all instructions carefully before operating the humidifier.
- Unpack and inspect for any signs of damage.
- Do not use the appliance if the cord has been damaged.
- Check the household voltage to ensure it matches the units rated in the specification before plugging the humidifier in.
- Always place the air freshener on a firm, flat, level surface. Always keep the cord away from heated surfaces and remember that the cord must not be stepped on.
- Do not place the air freshener in direct sunlight, near any source of heat.
- The air freshener is not a toy, keep it away from children.
- Keep out of children's reach in order to avoid the risk of body damage or electric shock.
- Do not operate outdoors. This appliance is intended for indoor use.
- Do not operate the appliance when the water tank is empty. Turn the appliance off.
- Fill the water tank only to the marked line.
- Always turn the appliance off and disconnect the power cord from the electrical outlet before cleaning in order to avoid electric shock. Do not carry the appliance when turned on.
- Always plug in and plug out the appliance with dry hands.
- Use the appliance only in accordance with its intended use.
- Do not spray the air freshener with any caustic chemicals, which could cause its damage.
- If the power cord is damaged, it has to be replaced only in service points or by qualified people.
- In order to prevent fire and electric shock, never dismantle the casing yourself.
- All service and maintenance operations except for cleaning and filling the tank with water must be performed by authorised service points.

Do not use a freshener for more than 24 hours. After this time, change the water and turn off the equipment for 1 hour.

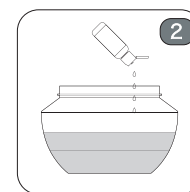
| Tápfeszültség (DC Volt) | Teljesítmény (Watt) | Megengedett vízhőmérséklet (°C) | Víztartály űrtartalma (L) | A maximális idő dolgozhat egy töltő | Működési terület |
|-------------------------|---------------------|---------------------------------|---------------------------|-------------------------------------|-------------------|
| 230V | 14W | 1 - 40 ° | 1,1 l | 24 óra | 40 m ² |

* A gyártó fenntartja magának a készülék specifikációjának változtatási vagy módosítási jogát előzetes értesítés nélkül.

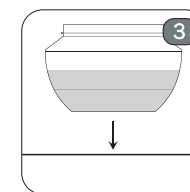
Hogyan kell használni:



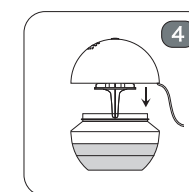
1 Vegye ki a felső illatosító és töltsse fel a víztartályt



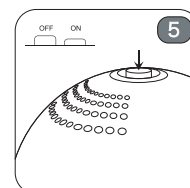
2 Adjunk hozzá néhány csepp aroma közvetlenül a tartály vízzel



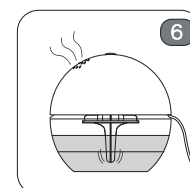
3 Hely illatosító sík felületre



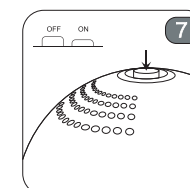
4 Helyezze vissza a fedelét. Győződjön meg róla, hogy a fedél megfelelően helyezett a tartály vízzel



5 Kapcsolja be a kábelkimenetnél majd nyomja meg a bekapcsoló gombot

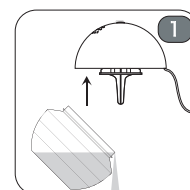


6 Néhány perc múlva máris élvezheti a kedvenc illat



7 A gomb ismételt megnyomásával Teljesítmény kapcsolja ki a készüléket

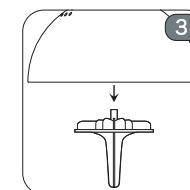
Tisztítás:



1 Vegye le a készülék tetején és engedje le a vizet



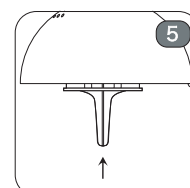
2 Mossa ki a víztartályt és törölje szárazra



3 Vegye ki a keverő a fedelét



4 A tisztításhoz a keverő és puha fedél szövet



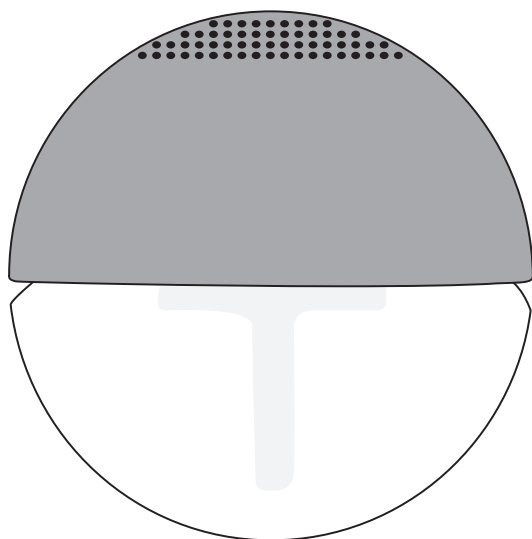
5 Hozzon létre egy agitátor a borítón



A WEEE 2002/96/CE környezetvédelmi direktívával megegyezően tilos az elhasznált elektromos és elektronikus berendezések környezetbe vagy nyilvános hulladéklerakó helyre történő kidobása. Azokat megfelelő újrahasznosító pontba kell leadni.

SANICO

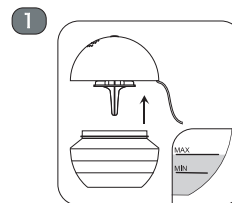
HASZNÁLATI UTASÍTÁS



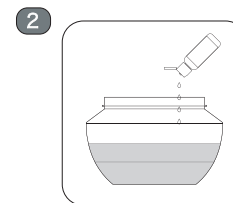
LÉGTISZTÍTÓ

ORBIT KJ869M

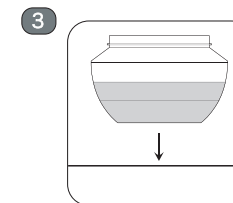
Use:



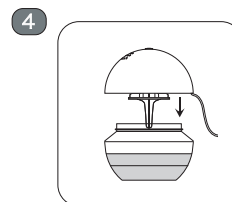
Remove the cover and fill in water up to the MAX/MIN line



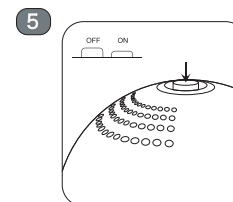
Add the air revitaliser concentrate into the water



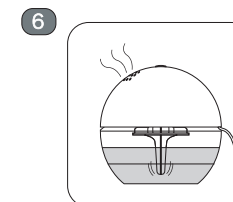
Keep the bowl in the flat place



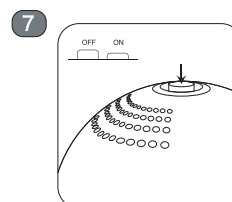
Replace the cover. Make sure the cover is securely seated on the bowl



Plug in the electrical cord and turn on the ON/OFF switch

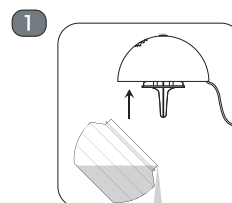


After few minutes, you can enjoy the fresh air with aroma

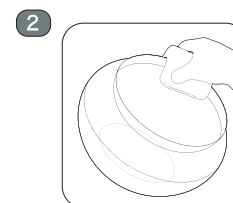


Please turn off and shut the power when you do not use it

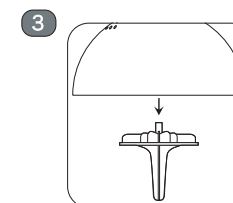
Cleaning:



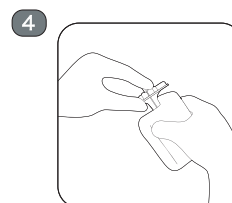
Remove the cover and pour the water



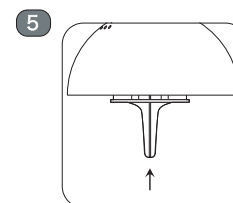
After clean the machine, please dry it up



Remove the stir bar from the cover



Please use soft rag to clean the stirrer bar and the cover



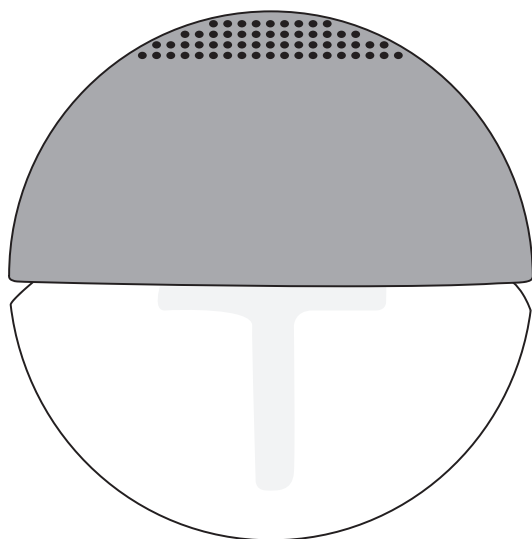
Put the stirrer bar into the cover



Do not dispose of electrical appliances as unsorted municipal waste, use separate collection facilities. Contact your local government for information regarding the collection systems available. If electrical appliances are disposed of in landfills or dumps, hazardous substances can leak into the groundwater and get into the food chain, damaging your health and well-being. When replacing old appliances with new ones, the retailer is legally obligated to take back your old appliance for disposals at least free of charge.

SANICO

NÁVOD K OBSLUZE



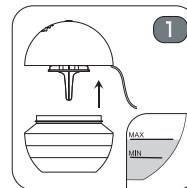
OSVĚŽOVAČ VZDUCHU

ORBIT KJ869M

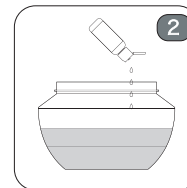
| Maitinimo įtampa (DC Volt) | Galia (Watt) | Prileidžiama vanden temperatūra (°C) | Vandens rezervuaro talpa (L) | Maksimalus laikas dirbti vienoje pildymas | Veikimo plotas |
|----------------------------|--------------|--------------------------------------|------------------------------|---|-------------------|
| 230V | 14W | 1 - 40 ° | 1,1 l | 24 valandos | 40 m ² |

* Gamintojas turi teisę keisti ar modifikuoti įrangos specifikaciją be išankstinio perspėjimo.

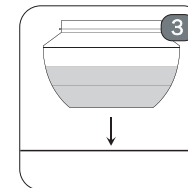
Kaip naudoti:



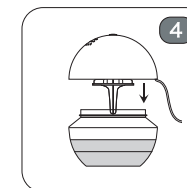
Nuimkite viršutinį gaiviklis ir į vandens bakelį



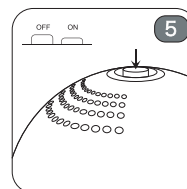
Ilašinkite keletą lašų aromata tiesiogiai su vandens talpa



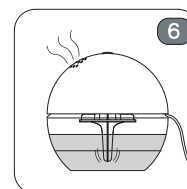
Vieta gaiviklis ant lygaus paviršiaus



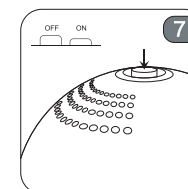
Vėl uždėkite dangtelį. Įsitikinkite, kad dangtelis yra tinkamai ant bako su vandeniu



Ijunkite kabelio lizdą ir paspauskite maitinimo mygtuką

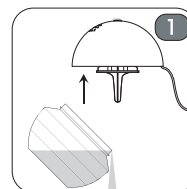


Po kelių minučių jūs būsite galėtų naudotis savo mėgstamas aromatas

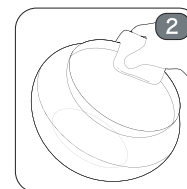


Paspauskite mygtuką dar kartą Teisė išjungti prietaisą

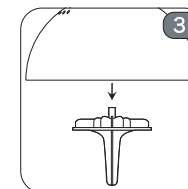
Valymas:



Nuimkite prietaiso viršuje ir išleisti vandenį



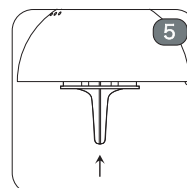
Išplaukite vandens talpą ir po to sausai iššluostykite



Pašalinti maišyklę nuo dangtelio



Norėdami valyti maišytuvą ir naudoti minkštas viršelius audinys



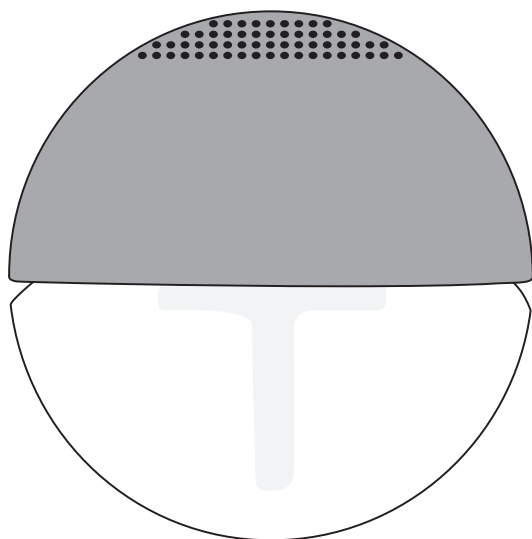
Sukurti maišytuvu viršelio



Pagal WEEE 2002/96/CE direktyvą dėl aplinkos apsaugos yra draudžiama šalinti sunaudotus elektrinius ir elektroninius įrengimus į aplinką arba į įprast viešąjį sąvartyną. Reikia atiduoti į atitinkamą perdirbimo centrą

SANICO

NAUDOJIMO INSTRUKCIJA



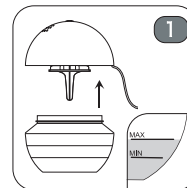
ORO GAIVIKLIS

ORBIT KJ869M

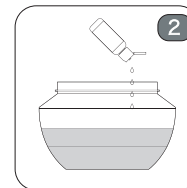
| Napájecí napětí (DC Volt) | Výkon (Watt) | Přípustná teplota vody (°C) | Objem nádržky na vodu (L) | Maximální trvalé pracovní doba. | Oblast činnosti |
|---------------------------|--------------|-----------------------------|---------------------------|---------------------------------|-------------------|
| 230V | 14W | 1 - 40 ° | 1,1 l | 24 h. | 40 m ² |

* Výrobce si vyhrazuje právo provádět změny nebo úpravy specifikace přístroje bez předchozího upozornění.

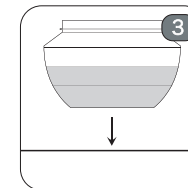
Jak používat:



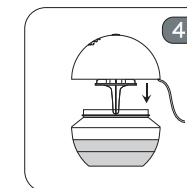
Odstraňte vrchní osvěžovač a naplňte nádržku na vodu



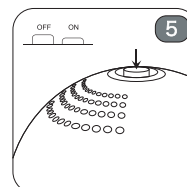
Přidejte několik kapek aroma přímo do nádrže s vodou



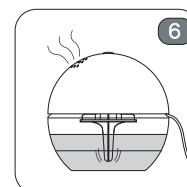
Místo osvěžovač na rovnou plochu



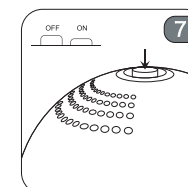
Vraťte kryt. Ujistěte se, že kryt správně umístěna na nádrži s vodou



Zapněte kabelovým vývodem a stiskněte tlačítko napájení.

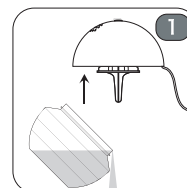


Po několika minutách budete možnost užít si oblíbená vůně



Stiskněte tlačítko znovu. Napájení vypněte zařízení

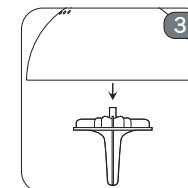
Čištění:



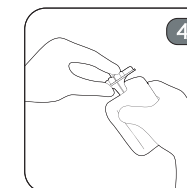
Vyměňte horní části přístroje a vypusťte vodu



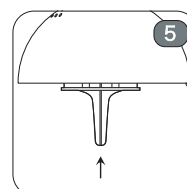
Umyjte na vodu a ji vytřete dosucha



Vyměňte míchadla z krytu



K čištění mixér a měkkým kryt tkanina



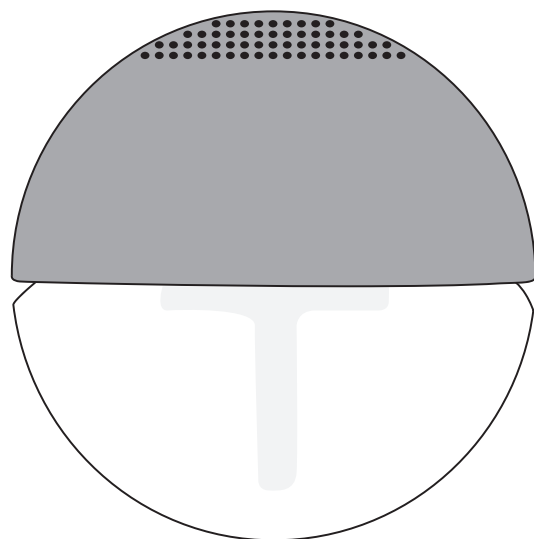
Vytvořte míchadla na krytu



Podle směrnice 2002/96/EC o ochraně životního prostředí je zakázáno stará elektrická a elektronická zařízení vyhazovat do přírody nebo na obvyklou skládku odpadů. Tato zařízení musí být odevzdána k recyklaci na příslušném sběrném místě.

SANICO

NÁVOD NA POUŽITIE



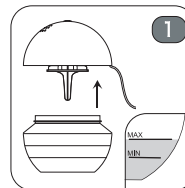
OSVIEŽOVAČ VZDUCHU

ORBIT KJ869M

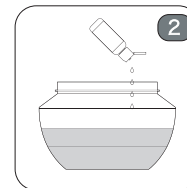
| Napätie napájania (DC Volt) | Príkonn (Watt) | Prípustná teplota vody (°C) | Objem zásobníka na vodu (L) | Maximálny čas práce na jedného plniaci | Dosah pôsobenia |
|-----------------------------|----------------|-----------------------------|-----------------------------|--|-------------------|
| 230V | 14W | 1 - 40 ° | 1,1 l | 24 h. | 40 m ² |

*Výrobca si vyhradzuje právo na zmeny alebo modifikácie špecifikácií zariadenia bez predchádzajúceho oznámenia.

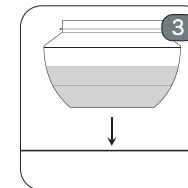
Ako používať:



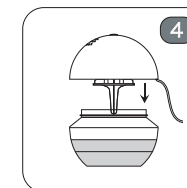
Odstráňte vrchnú osviežovač a naplňte nádržku na vodu



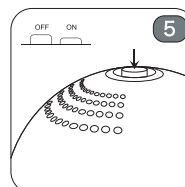
Pridajte niekoľko kvapiek aroma priamo do nádrže s vodu



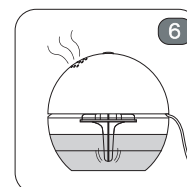
Miesto osviežovač na rovnú plochu



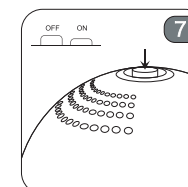
Vráťte kryt. Uistite sa, že kryt správne umiestnená na nádrži s vodu



Zapnite káblovým vývodom a stlačte tlačidlo napájania.

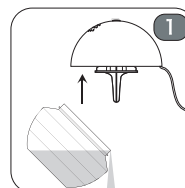


Po niekoľkých minútach budete možnosť užiť si obľúbená vôňa



Stlačte tlačidlo znova Napájanie vypnite zariadenie

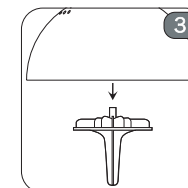
Čistenie:



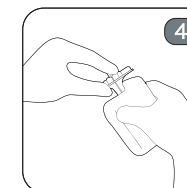
Výberte hornej časti prístroja a vypustíte vodu



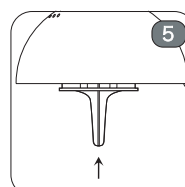
Umyte na vodu a ju vytrite dosucha



Výberte miešadlo z krytu



Na čistenie mixér a mäkkým kryt tkanina



Vytvorte miešadlá na kryte



V súlade s nariadením WEEE 2002/96/CE o ochrane životného prostredia je zakázané vyhadzovať použité elektrické a elektronické zariadenia v životnom prostredí alebo na bežné verejné skládky odpadu. Musia byť odovzdané na príslušnom recyklačnom mieste.